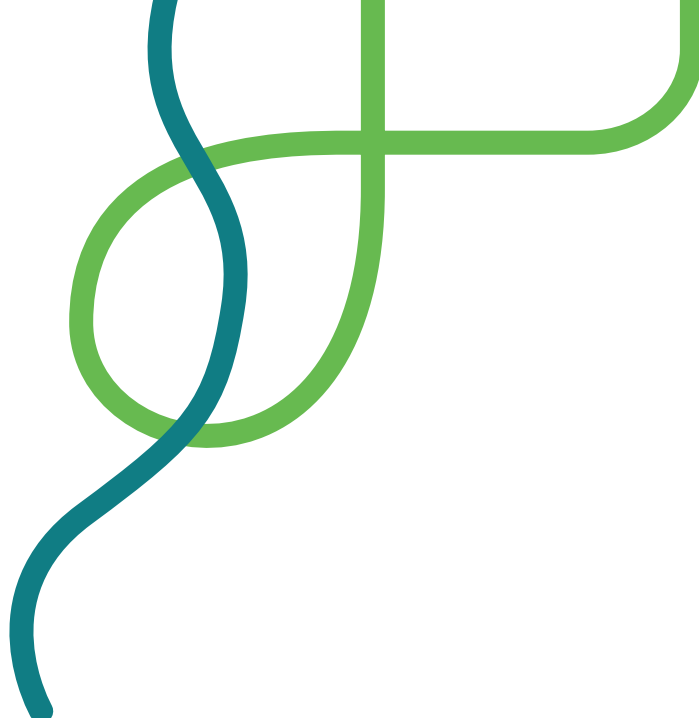


Your TEAMGreen collection box



A collection box is an easy way to grab people's attention and raise money for your fundraiser.

You will need:

Scissors



Card



Glue



1

Firstly print off the box template onto a piece of card. Handy tip – if you don't have card you could glue the template to an empty cereal box.

3

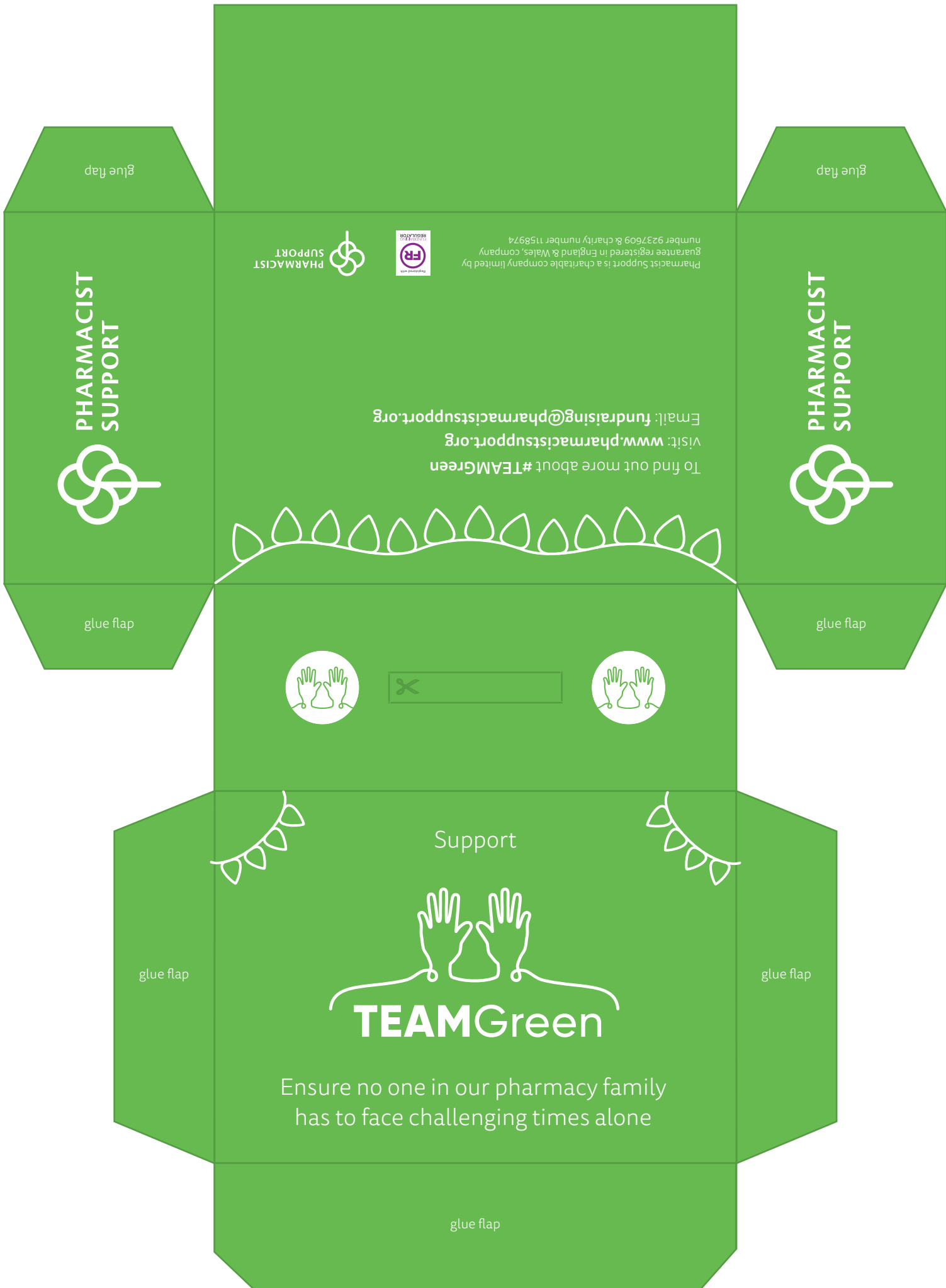
Finally, bend the cardboard along the dark green lines and, using the glue flaps, glue your box together.

2

Cut around the template.

4

Get collecting! Display in a prominent but safe and secure place. Then when ready, count up your donations and transfer the money raised to the TEAMGreen campaign page as per the instructions in the TEAMGreen fundraising toolkit.



glue flap

glue flap

PHARMACIST SUPPORT



Pharmacist Support is a charitable company limited by guarantee registered in England & Wales, company number 9237609 & charity number 1158974

To find out more about #TEAMGreen
visit: www.pharmacistsupport.org
Email: fundraising@pharmacistsupport.org

PHARMACIST SUPPORT



PHARMACIST SUPPORT



glue flap

glue flap



Support



glue flap

glue flap

Ensure no one in our pharmacy family
has to face challenging times alone

glue flap